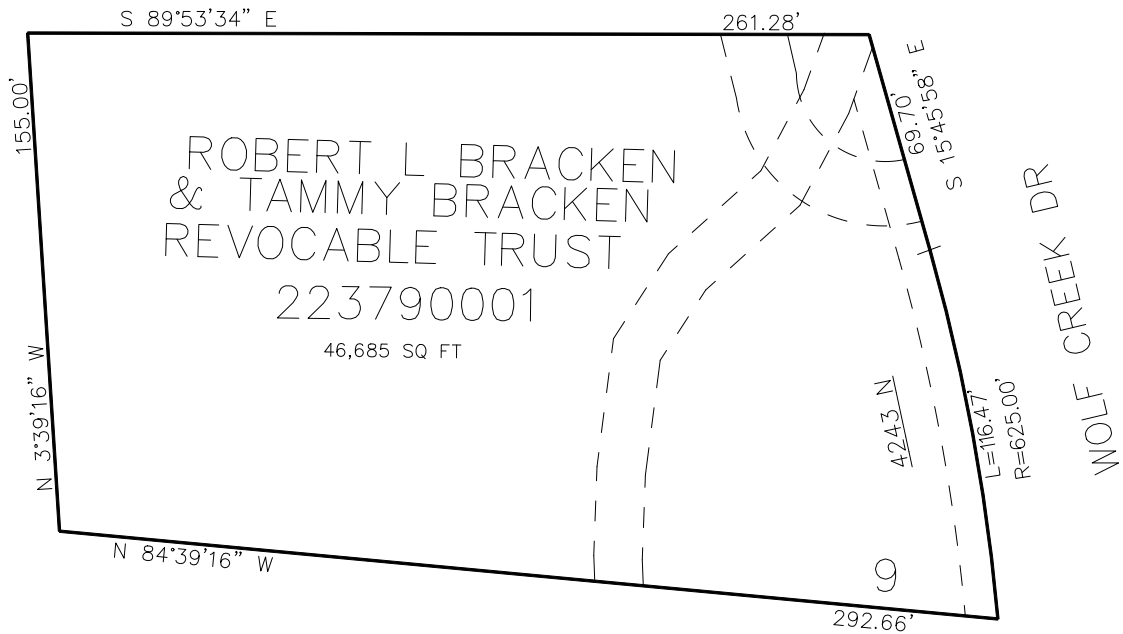


PART OF THE NW. 1/4, OF SECTION 22, T.7N., R.1E., S.L.B. & M.  
**HIDDEN OAKES AT WOLF CREEK 1ST AMENDMENT**

TAXING UNIT: 203

IN WEBER COUNTY  
SCALE 1" = 30'

SEE PAGE 209



SEE PAGE 19

10' UTILITY & DRAINAGE EASEMENTS EACH  
SIDE OF PROPERTY LINES AS INDICATED  
BY DASHED LINES EXCEPT AS OTHERWISE  
SHOWN.

FOR COMPLETE ENC DATA SEE  
ORIGINAL DEDICATION PLAT IN  
BOOK 88, PAGE 56 OF RECORDS.